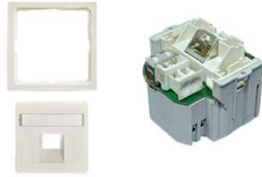


OMA 111 A2 WLAN-CH(Swiss Version)

POF WiFi Access Point 1 x RJ45 flush-mounted 100 Mbps - Fast Ethernet



Product Description

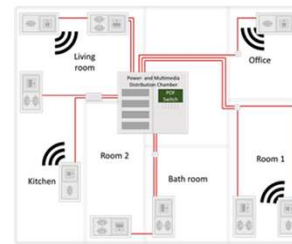
POF flush-mounted Switch with integrated media converter to provide network access and WiFi access at the electrical installations.

Power supply over L/N wiring clamp on the side of the device.

The POF WiFi access point is suitable for home- and office networks with few clients and small space. With this device access point WiFi can be provided in the rooms, where it is needed. The web interface offers all necessary configuration options.

Standard cover plates for System Feller are included in the scope of delivery (DIN UAE 8).

Application Example:



| Purchase Unit (PU) | Content | Unit | width (PU in mm) | depth (PU in mm) | height (PU in mm) | weight (PU in kg) |
|--------------------|---------|------|------------------|------------------|-------------------|-------------------|
| OMA 111 A2 WLAN-CH | 1 | Pcs. | 85 | 85 | 60 | 0.12 |

Characteristics

| | |
|--|----------------------------------|
| product category | access point |
| ports / number of ports | 1 x RJ45, 1 x POF, 1 x WiFi |
| bandwidth | Fast Ethernet |
| operating temperature | -5 °C to +35 °C (23 °F to 95 °F) |
| degree of protection according to DIN EN 60529 | IP20 |
| class of protection according to DIN EN 61140 | II |
| installation | flush-mounted |
| device dimensions (WxDxH) in mm | 55.0 x 50.0 x 53.0 |
| weight in gramm | 77 g |

Power and Consumption

| | |
|-------------------|--|
| power connector | internal power supply, L/N: wiring clamp for fixed wires 1.5 mm ² |
| voltage rating | (100-240) V AC (50-60) Hz |
| power consumption | typ. 3.9 W |

Network ports

| | |
|--|-----------|
| number of network ports | 1 x RJ45 |
| information rate of network ports | 100 Mbps |
| transmission distance of network ports | 100 m |
| preferred cable for network ports | CAT 5e, 6 |
| bandwidth network ports | 100 MHz |

Optical network ports

| | |
|--|--|
| number of optical ports | 1 x POF connector less / Optolock for 2.2 mm POF cable |
| information rate of optical ports | 100 Mbps |
| transmission distance of optical ports | 80 m |
| preferred cable for optical ports | POF 2.2 mm class A4a.2 according IEC60793-2 |
| wave length of optical ports | 650 nm visible red light, harmless to the eye |

WiFi characteristics

| | |
|---------------------------------------|----------------|
| number of wireless antennas | 2 |
| information rate of wireless antennas | 300 Mbps |
| transmission distance wireless | 5 m / 15 m |
| supported wireless frequencies | 2.4 GHz |
| supported wireless bandwidth | 20 MHz, 40 MHz |

Standards

| | |
|--------------------|--|
| ethernet standards | IEEE 802.3, IEEE 802.3u, IEEE 802.11 b/g/n |
| CE / RoHS | CE marked, RoHS compliant |
| FCC | N/A |

1.0

homefibre digital network gmbh | Fratresstrasse 20 | 9800 Spittal a. d. Drau | Austria
Telephone +43 4762 35391 | Fax +43 4762 42780 | welcome@homefibre.at | www.homefibre.at

19.07.2021

Subject to errors, omissions and changes

Version:

2021-07